



# PRIME<sup>®</sup>

DENTAL PRODUCTS PVT LTD

Established in 1987

Manufacturer & Importer of Dental Materials & Equipment

# Product Catalog 2024 - 25



[Prime-Dental.in](http://Prime-Dental.in)



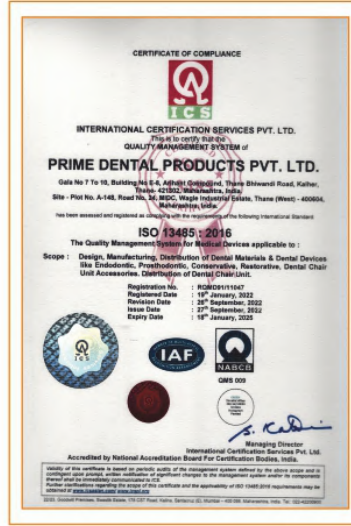
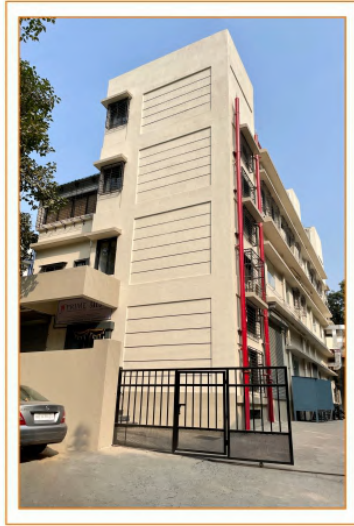
+91 9503289380



[info@prime-dental.in](mailto:info@prime-dental.in)



# About us



## Company Overview:

Prime Dental Products Pvt Ltd is a Manufacturer & Importer of Medical Devices. It was established in 1987 by Mr Bharat Thakkar & Dr Paresh Thakkar as a dental trading concern.

Today, we are one of the leading dental manufacturers in India with a manufacturing facility spread over 20,000 sq. ft. of state-of-the-art, ISO 13485:2016 Certified space, located in Western India's most premium industrial zone, MIDC Wagle Estate.

We serve the dental community in length & breadth of India with the widest dealer network. We also offer our manufactured dental line internationally through our overseas trade partners.

Prime Dental wants to serve the dental fraternity with even more commitment with the next generation Mr Tanay Thakkar & Mr Jay Thakkar joining in.

## Dental Materials - 'Make in India' initiative:

We are committed to serve the dental community offering globally acceptable quality products at competitive prices and timely delivery.

Our product range include;

- **Endodontic materials:** MTA Bioceramic Sealer, RC Help (EDTA Gel), RC Cal (Calcium hydroxide in ready to use paste form for temporary RC filling), RC Seal (Epoxy Bonded RC Sealant).
- **Prosthodontic materials:** Prime Chrome (Chromatic alginate impression material), Retra Gel (Retraction Gel) & the foremost manufacturer of Addition silicone impression material (Ad Sil Accura), Bite Registration Putty.
- **Conservative materials:** Restorite Etching Gel (37% orthophosphoric acid gel), TMP-RS (Ready to use temporary filling putty material), Dent Wash (Liquid EDTA).
- **Finishing materials:** Aster prophyl (pumice based prophylaxis paste) and Aster Compo (Alumina based composite polishing paste).
- **Composites:** Restorite range of Composites offers first in class physical properties viz. Bulk Fill, Flow Viscous, Pit & Fissure Sealant, Micro Hybrid Composite, Nano Hybrid, Core Build-up, Restorite Bond 5G (Total etch), Restorite Bond 7G (Self etch).

## Import & Distribution:

Since 1991, Prime Dental is representing many renowned international brands in India.

## Dental Equipment:

Since 2007, We are dealing in the finest quality of fully programmable electrical Dental chairs & heavy/light Suctions. We have various models of diverse range to cater all your requirements. We specialize in new clinic setup & up-gradation with robust after-sale service.

## OBL Products:

**Prime Products:** Prime X-Ray Film, Prime Cord (Knitted Retraction cord), Prime Disposables (Gloves, Face Mask, Saliva Ejectors).

**Allure :** Airtors.

**Ace:** Endodontic Hand & Rotary Instruments & Diamond Burs.

## Achievements:

**Best Dental Manufacturer - Make in India**  
**at 1<sup>st</sup> National Oral Healthcare Sushruta Awards**  
**hosted by Indian Dental Association (IDA) Foundation**  
**at the hands of Honourable Former President of India,**

**Dr. A. P. J. Abdul Kalam**





**New Products** ✦

**Ready-to-Use  
Bioceramic Putty for Root Repair**



**Prime MTA BioPutty**  
 Ready-to-Use  
 Bioceramic Putty for Root Repair  
 Highly Radiopaque

Contents  
 2g Syringe

**AR** **FR** **ES**

مستعمل لإصلاح جذور الأسنان وإصلاح الجذور  
 Pâte Biocéramique Prête à l'Emploi pour Réparer les Racines  
 Pâte Biocerámica Lista para Usar para Reparar de Raíces

**Ready-to-Use  
Bioceramic Intra Canal Filling Material**



**PRIME BioTemp**  
 Ready-to-Use  
 Bioceramic Intra Canal Filling Material  
 Non-Setting Paste

Contents  
 3g Syringe & 5 Capillary Tips

**AR** **FR** **ES**

المادة غير المتصلبة المستخدمة من أجل ملء قناة الجذر  
 Matériau d'obturation canalaire préformé biocéramique non-croquant  
 Material de relleno temporal para conductos radiculares de biocerámica no endurecedora

**Flowable Composite for Sealing  
Orifice & Pulpal Floor**




**PRIME PurpleSeal**  
 Flowable Composite for Sealing Orifice & Pulpal Floor  
 Purple Shade

Contents: 3g Syringe

**AR** **FR** **ES**

مادة مركبة سائلة لإغلاق فتحة الجذر وقاع البصلة  
 Pâte de scellement de canal radiculaire composite à l'état fluide  
 Pâte de resina para sellar conductos radiculares compuesta de resina de flujo

**Calcium Hydroxide Iodoform Paste  
Temporary Root Canal Filling Material**



**PRIME RC Pex**  
 Calcium Hydroxide Iodoform Paste  
 Temporary Root Canal Filling Material  
 Highly Radiopaque

Contents  
 3g Syringe & 5 Capillary Tips

**AR** **FR** **ES**

مادة حشو الجذور المؤقتة المكونة من هيدروكسيد الكالسيوم  
 Pâte biocéramique hydroxyde de calcium iodoforme à usage temporaire de canal radiculaire hautement radiopaque  
 Pâte de iodoforme de calcio hidróxido. Material de obturación temporal del conducto radicular altamente radiopaco

**Prime MTA  
Bioceramic  
Root Canal Sealer**



**PRIME Bioceramic Root Canal Sealer**

Contents  
 3g Paste & 15 Capillary Tips

**AR** **FR** **ES**

مادة سدادة قناة الجذر من السيراميك الحيوي  
 Pâte de scellement de canal radiculaire biocéramique Prime MTA  
 Prime MTA Sellador de conductos radiculares biocerámicos Pasta

**Root Repair Material**



**PRIME Prime MTA Packable**

Contents  
 1g Powder + 5ml Liquid

**AR** **FR** **ES**

Prime MTA قابلة للتعبئة  
 Prime MTA Emballable  
 Prime MTA empacable



**New Products** ✦

**Glass Ionomer Cement**

Contains Zirconium Oxide



**Putty**



**Light Body**



**No Heating Required**





## Restorite

### Restorite Bond 5G

5<sup>th</sup> Generation Bonding Agent for Dentine /Enamel



- Light-cured one component Total Etch System.
- Provides very good adhesion to dentine and enamel.

Available Packing : 5ml bottle

### Restorite Bond 7G

7<sup>th</sup> Generation Self Etch Bonding Agent For Dentine & Enamel



- Light cured one component Self Etch Bonding System
- Provides very good adhesion to dentine and enamel

Available Packing : 5ml bottle

### Restorite Bulk Fill (Flowable)

Light Cure Flowable Bulk Fill Composite Filling Material



- Depth of cure 4mm
- Available Shade  
**Universal**

Available Packing : 2g syringe

### Restorite Bulk Fill Kit (Flowable)

**Contents:**

- Restorite Bulk Fill Flowable (2gm)- 4
- Application Needles for Restorite Bulk Fill Flowable - 20



Shades included : Universal - 4

### Restorite Bulk Fill (Packable)

Light Cure Packable Bulk Fill Composite Filling Material



- Depth of cure 4mm
- Available Shade  
**Universal**

Available Packing : 4g syringe

### Restorite Bulk Fill Kit (Packable)



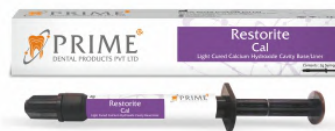
**Contents:**

- Restorite Bulk Fill Packable (4gm) - 7
- Restorite Bond 7G (5ml) - 1
- Restorite Etching Gel (3ml) - 1
- Aster Compo (4g) - 1
- Application Needles for Restorite Etching Gel - 5
- Microbrush - 10

Shades included: Universal - 7

### Restorite Cal

Light cured Calcium Hydroxide Cavity Base/Liner



- Easy to use, light curable, one component system
- Used for direct and indirect pulp capping
- Used as cavity liner under filling material
- Low solubility

Available Packing : 2g syringe

### Restorite Cavo Surface Sealer

Light Cured; Unfilled Methacrylate Resin-Based Cavo Surface Sealer



- For better margin integrity.
- For filling micro cracks.
- Can be used for GI and Composites.

Available Packing : 5ml bottle

### Restorite Core Build-Up

- Depth of Cure 6mm



Available Shade  
**Translucent Shade**

Available Packing : 4g syringe

### Restorite Desensitiser

Liquid Solution for Hyper Sensitivity

- To treat pain in exposed cervical areas not indicated for restoration
- To alleviate or prevent dental sensitivity after preparation of teeth to receive direct or indirect restorations.
- For total etch system Restorite Desensitiser can be used as a re-wetting agent.



Available Packing : 5ml bottle



## ✦ Restorite Etching Gel 37% Phosphoric Acid, Contains Silica

### Thixotropic



- Opaque bright purple color.
- Enamel etchant.
- Contains silica.
- Thixotropic gel.
- 37% Orthophosphoric acid.

Also available : Blue colour, Flowable consistency, Silica free

Available Packing • **Regular Pack** : 3ml syringe & 5 application needles.  
 • **Value Pack** : 25ml syringe, 25 application needles; 1 contactor & 3ml empty syringe.  
 • **Big Pack** : 2 x 25ml syringe, 50 application needles; 1 contactor & 2 x 3ml empty syringe.

## Restorite Flow Viscous Light Cure Flowable Viscous Composite Filling Material



Available Shade  
 A1  
 A2  
 A3  
 B2

Available Packing : 2g syringe

## ✦ Restorite Flow Viscous Kit



### Contents:

- Restorite Flow Viscous (2gm) - 4
- Application Needles for Restorite Flow Viscous - 20

Shades included: A1, A2, A3 & B2

## Restorite Micro Hybrid Light Cure Resin-Based Dental Restorative Material



Available Shade  
 A1, A2, A3, A3.5, B1 & B2

Available Packing : 4g syringe

## ✦ Restorite Micro Hybrid Kit



### Contents:

- Restorite Micro Hybrid (4gm) - 7
- Restorite Bond 7G (5ml) - 1
- Restorite Etching Gel (3ml) - 1
- Aster Compo (4g) - 1
- Application Needles for Restorite Etching Gel - 5
- Microbrush - 10

Shades included: (A1 - 2) (A2 - 2) (A3 - 2) & (B2 - 1)

## Restorite Modelling Resin



Composite Sculpting Agent

- Low viscosity light curable resin for sculpting of composite.

Available Packing : 5ml bottle

## Restorite Nano Hybrid Light Cure Resin-Based Dental Restorative Material



Available Shade  
 A1, A2, A3, B2

Shades included : 4g Syringe

## ✦ Restorite Nano Hybrid Kit



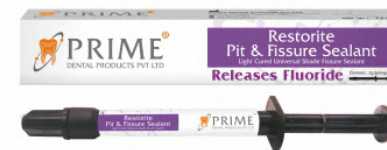
### Contents:

- Restorite Nano Hybrid (4gm) - 7
- Restorite Bond 7G (5ml) - 1
- Restorite Etching Gel (3ml) - 1
- Aster Compo (4g) - 1
- Application Needles for Restorite Etching Gel - 5
- Microbrush - 10

Shades included: (A1 - 2) (A2 - 2) (A3 - 2) & (B2-1)

## Restorite Pit & Fissure Sealant

Light Cured Universal Shade Fissure Sealant



Available Shade  
 Universal Shade

Available Packing : 2g syringe

## Endodontic

### BioTemp



Easy & Ready-to-Use Bioceramic Intra Canal Temporary Filling Material

- Radiopaque
- Intracanal dressing material
- Non-setting, ready-to-use paste
- Contains silicates for gradual release of calcium ions
- Can be left in the root canal for up to 3 weeks
- Easy to remove
- Recommended for use in cases of perforation & resorption prior to Prime's MTA Putty, TA Packable & MTA Bioceramic Sealer

Available Packing : 3g Syringe & 5 Capillary Tips



### Citra Wash



20% Citric Acid Solution

- Cleansing/conditioning of prepared canals, and
- Dissolving/cleaning residues of calcium hydroxide
- Removing smear layer

Available Packing : 30ml Bottle.

### Prime MTA Bioceramic Root Canal Sealer

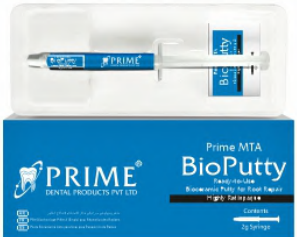


- Ready-to-Use Paste.
- Premixed, Easy-to-Use.
- Radiopaque
- Bioactive & Biocompatible
- Hydrophilic

Available Packing : 3g Paste & 15 Capillary Tips

### Prime MTA BioPutty

Ready-to-Use Bioceramic Putty for Root Repair



- Putty Consistency
- Non-Staining
- Highly Radiopaque

Available Packing : 2g Syringe

### Prime MTA Packable



MTA Packable can be used for Apexification, Repairing root perforations, Internal root resorption and Pulp capping.

Available Packing : 1g Powder & 5ml Liquid

### Primecresol



Formocresol

Available Packing : 15ml Bottle

### PurpleSeal



Flowable Composite for Sealing Orifice and Pulpal Floor

- Light-Cured Flowable Purple Composite
- High Filler Load: 67%
- Easy Identification of Orifice During Retreatment
- Can Also Be Used for Pulpal Floor Sealing
- Radiopaque

Available Packing : 2g Syringe & 5 Applicator Tips

### RC Cal



**Without Iodoform**

Ready to Use Paste. Intracanal Temporary Filling

- Contains barium sulphate. Radio opaque.
- Highly alkaline Ca(OH)<sub>2</sub> paste.
- Can be easily removed by reamers.
- Non drying paste.

Available Packing • 2g syringe & 5 application needles

### RC Cal-I



**With Iodoform**

Ready to Use Paste. Intracanal Temporary Filling

- Contains barium sulphate. Radio opaque.
- Highly alkaline Ca(OH)<sub>2</sub> paste.
- Can be easily removed by reamers.
- Non drying paste.

Available Packing • 2g syringe & 5 application needles

### RC Pex



- Highly radiopaque calcium hydroxide paste with iodoform.
- Capillary tips for easy dispensing.

Available Packing • 3g syringe & 5 Capillary Tips

### RC Fill



**Without Iodoform**

Root Canal Sealant & Filling

- Contains Calcium Hydroxide, Zinc oxide & Eugenol. (Without Iodoform)
- Radio opaque.
- Bioresorbable set mass.

Available Packing : 15g Powder ,10ml Liquid & 5g accelerator

### RC Fill-I



**With Iodoform**

Root Canal Sealant & Filling

- Contains Calcium Hydroxide, Zinc oxide & Eugenol. (With Iodoform)
- Radio opaque.
- Bioresorbable set mass.

Available Packing : 15g Powder ,10ml Liquid & 5g accelerator



## RC Help

Lubricating Paste for RC Biomech.



- EDTA paste.
- Contains carbamide peroxide.
- Increases RCT instrument's life.
- Gentle O<sub>2</sub> release while irrigating with NaOCl.
- Cleanses canal

Available Packing • **Regular Pack** : 3g syringe & 5 application needles  
 • **Big Pack** : 20g big syringe, 25 application needles, 1 contactor & 3g empty syringe

## RC Seal

Epoxy Bonded Root Canal Sealant



- Root canal sealant.
- Epoxy bonded.
- Virtually formaldehyde free.
- Shrink free set.
- Eugenol free.
- Shall not retard composite setting.
- Non Bio Resorbable.

Available Packing : 10g Powder & 10ml Liquid  
 ● 10ml refill liquid also available separately

## RC Seal Plus

Epoxy Bonded Root Canal Sealant



- Hexamine free Epoxy bonded root canal sealant.
- Easy to mix paste-paste system in a two-barrel syringe.
- High radio opacity.
- Long term sealing properties.
- Good dimensional stability.

Available Packing : 1 x 15.5g Dual syringe

## RC Soft

Softens Resin Based Cements



- Softening agent for epoxy resin based root canal sealants.

Available Packing : 15ml bottle

## RC Solve

GP & ZnOE Solvent



- Softens GP points.
- Softens zinc oxide cement.
- Controlled penetration to avoid disturbing apical seal.
- Shall not retard composite setting.

Available Packing : 15ml bottle

## RC Twents

Irrigation Needle



- Irrigation needle with two side vents.
- Side vent avoids irrigation fluid to be pushed apically.

Available Packing : 10pcs in a pack

## Sodium Hypochlorite

For Root Canal Irrigation



- Available in 3% & 5.25% strength
- Mint aroma
- With pH buffer
- Can digest pulpal debris

Available Packing : 500ml Bottle in 3% & 5.25%

## Prosthodontic

### Prime Cem Luting

Glass Ionomer Cement



Available Packing : 15g Powder, 10ml Liquid, Scoop/Spatula & Mixing Pad

### Ad-Sil Acura Bite Registration Putty



- No Heating required
- Addition Silicone based Bite Registration Putty
- Shore A - 87
- Easy-to-Use
- Can be used for indexing
- No wastage compared to Bite Registration in Cartridge form

Half Arch Bite Impressions  
x 40

Available Packing : 100ml Base & 100ml Catalyst

### Ad-Sil Acura Putty - Hard Set



- Shore A-80.
- Addition silicone impression material.
- Accurate detailed reproduction.
- Highly stable impression.
- Compatible to all dye materials.
- Suitable for all impression technique.
- Ideal choice of impression for multiple pouring.

Full arch impressions  
x 31

Available Packing : 400g Base & 400g Catalyst



## Ad-Sil Acura Putty - Soft Set



- Shore A-60.
- Addition silicone impression material.
- Accurate detailed reproduction.
- Highly stable impression.
- Compatible to all dye materials.
- Suitable for all impression technique.
- Ideal choice of impression for multiple pouring.



Available Packing : 400g Base & 400g Catalyst

## Ad-Sil Acura Light Cartridge



Polyvinyl Siloxane Impression Material

- Shore A-65.
- Light body available in dual chamber cartridge.
- Hydrophilic nature.
- Can be used with any other addition silicone putty.

Available Packing : Cartridge 2 x 50ml (Base & Catalyst)

## Ad-Sil Acura Light Tubes



Polyvinyl siloxane impression material

- Shore A-65.
- Addition silicone impression material.
- Accurate detailed reproduction.
- Highly stable impression.
- Compatible to all dye materials.
- Suitable for all impression technique.
- Ideal choice of impression for multiple pouring.

Available Packing : Tubes 25ml Base & 25ml Catalyst

## Prime Chrome



Chromatic Alginate Impression Material

- Lemon flavour yellow powder.
- Thixotropic.
- Rubber effect.
- Dust free.
- Easy mix formula.
- Stable for 50 hours under humidity.

- Pink color: Mixing
- Light Pink: Working time
- Yellow: Loading time



Available Packing : 450g Pouch

## Algingum



Non-Chromatic Alginate Impression Material

- Mint flavour pista green powder.
- Thixotropic.
- Rubber effect.
- Dust free.
- Easy mix formula.
- Stable for 50 hours under humidity.



Available Packing : 500g pouch

## Clean Tray



Alginate and Plaster Residue Cleaner

- 250g powder for 2.5 litre solution.
- Biodegradable powder.
- Can clean up to 125 trays.

Available Packing : 250g Powder

## Dent Retract



Aqueous Ferric Chloride

- Helps in retraction of gingival.
- Does not retard the rubber base.

Available Packing : 30ml Bottle

## Desensitiser



Contains Potassium Oxalate

- Blocks dentinal tubules.
- For immediate relief from sensitivity.
- Use after vital crown cutting.

Available Packing • **Regular Pack** : 3g syringe & 5 application needles  
 • **Twin Pack** : 2 x 3g syringe & 10 application needles

## Green Stick



Tracing Sticks

- Low fusing compound.
- Soft green tracing sticks.
- For border moulding work.

Available Packing : 10 Sticks in a pack (90g)

## Image



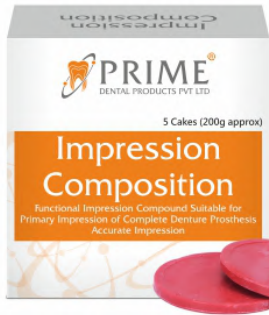
Impression Paste for Edentulous Cases

- Zinc oxide base.
- Eugenol free.
- No irritation to lip & mucosa.

Available Packing : 125g Base & 85g Catalyst



## Impression Composition



For Accurate Edentulous Impressions

- High fusing compound.
- Functional impression compound.
- Accurate impression.
- Suitable for primary impression of complete denture prosthesis.

Available Packing : 5 cakes in a pack (200g)

## Modelling Wax



- High quality wax.
- Available in gingiva colour.
- Soft for easy moulding.
- Available colour: Pink

Available Packing : 12 Sheets

## Retra Gel



25% Aluminum Chloride Gel

- Retra Gel is a 25% Aluminum Chloride aqueous viscous gel.
- No residue or stain making it ideal for use in the esthetic zone.
- The solutions facilitate the insertion of the cord into the sulcus

Available Packing : 3ml Syringe & 5 application needles

## Retra Liquid



25% Aluminium Chloride Aqueous Astringent Solution

- For chemical retraction of gingival margin
- Clear transparent solution
- Non-staining
- Use along with Prime Retraction Cord
- Wash after use before final impression

Available Packing : 30ml Bottle

## Templute



Temporary Luting for C & B

- Two paste system.
- Eugenol free.
- Shall not retard any bonding agent.
- C & B can be removed easily.

Available Packing : 50g Base & 15g Catalyst

## Conservative

### Aster Compo



Alumina Based Polishing Paste for Polishing Dental Composites.

- Non-splattering.
- Thixotropic nature.
- Mint fragrance.
- Fine grit.

Available Packing : 4g Syringe

### Prime Cem Restorative Glass Ionomer Material



Available Packing : 15g Powder, 10ml Liquid, Scoop/Spatula & Mixing Pad

### Prime Cem Ceramic Reinforced



Glass Ionomer Material Contains Zirconium Oxide

Available Packing : 15g Powder, 10ml Liquid, Scoop/Spatula & Mixing Pad

### Aster Prophy



Prophylaxis Paste

- Dental Prophylaxis Paste for polishing & removal of plaque & stains.
- Thixotropic nature.
- Non-splattering effect.
- Pumice based.
- Fluoride free.

### Aster Prophy (Pack of 4)



New Flavours :



Available Packing : 45g tube / Assortment pack of 4 / 200g Jar



## Caries Indicator



- Dye which shall stain carious dentin to bright red. This would enable dentist to distinguish carious lesion.
- Available colors : Red & Blue.

Available Packing : 15ml bottle

## Debubbler



Reduce Surface Tension Non Foaming Solution

- Spray to be Used Before Pouring Impressions or Wax Patterns
- Helps to avoid bubbles while pouring models.
- Fast drying surface tension reducer & cleanser.

Available Packing : 100ml Spray Bottle / 500ml Refill Jar

## Dent Dry

Dentin Drying & Cleansing Agent



- For having moist dentin surface
- Use before bonding of dentin
- Use before root canal sealant

Available Packing : 30ml Bottle

## Dent Wash

Aqueous EDTA



- 17% EDTA
- For smear layer removal.
- Use before bonding of dentin.
- Use before root canal sealant.

Available Packing : 30ml Bottle

## Dentfilloy

Silver Filling Alloy



68% Silver

- Dentfilloy is a superior quality fine grained conventional alloy.

Available Packing : 30g Bottle (Bulk pack on request)

## Dentfilloy NG

Silver Filling Alloy



48% Silver

- Dentfilloy is a superior quality fine grained conventional alloy.

Available Packing : 30g Bottle (Bulk pack on request)



## Etching Gel

37% Phosphoric Acid, Silica Free



- Blue color.
- Enamel etchant.
- Silica free.
- In soft gel consistency.
- 37% Orthophosphoric acid.

Also available : Purple colour, Thixotropic consistency, With Silica

Available Packing • **Regular Pack:** 3ml syringe & 5 application needles  
 • **Big Pack:** 2 x 25ml syringe, 50 application needles, 1 contactor & 2 x 3ml empty syringe.

## Etching Liquid

37% Orthophosphoric acid



- Enamel etchant.
- Silica free.
- Thick liquid consistency.
- 37% Orthophosphoric acid.

Available Packing : 15ml Bottle

## Mercury

Extra Purified Dental Filling Material Dental Grade



- Chemically purified

Available Packing : 30g Bottle / 225g Bottle

## NT Fog

Spray for Anti-Fog



- Effectively used on MM tops to make it fog free.

Available Packing : 100ml Spray Bottle.

## TMP-RS

Temporary Filling Material



- Eugenol Free
- Temporary filling for cavities.
- Sets with moisture.
- Easy to place and remove.
- Two wads to offer maximum protection from moisture.

Available Packing : 40g Bottle



### Temporary Filling Calcium Hydroxide Powder



Powder For Dental Cement  
For Cavity Base

- It can be used for pulp capping. Need to mix with water for injection to make paste of desired consistency while using

Available Packing : 10g Bottle

### Temporary Filling Eugenol Liquid



- Used with zinc oxide powder for temporary filling.

Available Packing : 15ml Bottle / 110ml Bottle

### Temporary Filling Zinc Oxide Powder



- Used with eugenol liquid for temporary filling material.

Available Packing : 100g Bottle

### Zinc Oxide Eugenol Cement Quick Set Polymer Reinforced Intermediate Restorative Material



Available Packing : 15g Powder / 10ml Liquid

### BiofilmX

Dental Chair Unit Waterline Biofilm Reducer



- Ready-to-use solution
- Economical method to maintain dental chair unit tubing hygiene
- 1 bottle offers 2 uses of 250ml each
- For new clinical setup only 250ml once a week is sufficient to obtain optimum results
- For old clinical setup 250ml needed for each day for the first 5 days and there after 250ml once a week is sufficient to obtain optimum results

Available Packing : 500ml Bottle

