



PRIME[®]

DENTAL PRODUCTS PVT LTD

Established in 1987

Manufacturer & Importer of Dental Materials & Equipment

International Catalog 2025



Prime-Dental.in

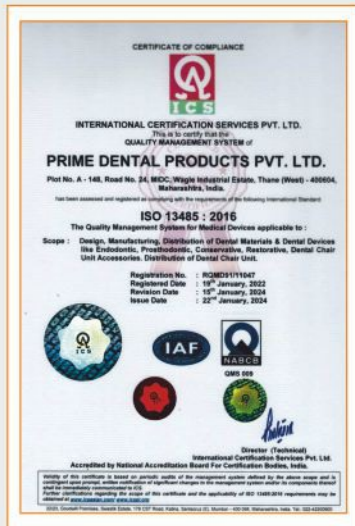


+91 9619635313



info@prime-dental.in

About us



Company Overview:

Prime Dental Products Pvt Ltd is a Manufacturer & Importer of Medical Devices. It was established in 1987 by Mr Bharat Thakkar & Dr Paresh Thakkar as a dental trading concern.

Today, we are one of the leading dental manufacturers in India with a manufacturing facility spread over 20,000 sq. ft. of state-of-the-art, ISO 13485:2016 Certified space, located in Western India's most premium industrial zone, MIDC Wagle Estate.

We serve the dental community in length & breadth of India with the widest dealer network. We also offer our manufactured dental line internationally through our overseas trade partners.

Prime Dental wants to serve the dental fraternity with even more commitment with the next generation Mr Tanay Thakkar & Mr Jay Thakkar joining in.

Dental Materials - 'Make in India' initiative:

We are committed to serve the dental community offering globally acceptable quality products at competitive prices and timely delivery.

Our product range include;

- **Endodontic materials:** MTA Bioceramic Sealer, RC Help (EDTA Gel), RC Cal (Calcium hydroxide in ready to use paste form for temporary RC filling), RC Seal (Epoxy Bonded RC Sealant).
- **Prosthodontic materials:** Prime Chrome (Chromatic alginate impression material), Retra Gel (Retraction Gel) & the foremost manufacturer of Addition silicone impression material (Ad Sil Acura), Bite Registration Putty.
- **Conservative materials:** Restorite Etching Gel (37% orthophosphoric acid gel), TMP-RS (Ready to use temporary filling putty material), Dent Wash (Liquid EDTA).
- **Finishing materials:** Aster prophyl (pumice based prophylaxis paste) and Aster Compo (Alumina based composite polishing paste).
- **Composites:** Restorite range of Composites offers first in class physical properties viz. Bulk Fill, Flow Viscous, Pit & Fissure Sealant, Micro Hybrid Composite, Nano Hybrid, Core Build-up, Restorite Bond 5G (Total etch), Restorite Bond 7G (Self etch).

Import & Distribution:

Since 1991, Prime Dental is representing many renowned international brands in India.

Dental Equipment:

Since 2007, We are dealing in the finest quality of fully programmable electrical Dental chairs & heavy/light Suctions. We have various models of diverse range to cater all your requirements. We specialize in new clinic setup & up-gradation with robust after-sale service.

OBL Products:

Prime Products: Prime X-Ray Film, Prime Cord (Knitted Retraction cord), Prime Disposables (Gloves, Face Mask, Saliva Ejectors).

Allure : Airotors.

Achievements:

Best Dental Manufacturer - Make in India
at 1st National Oral Healthcare Sushruta Awards
hosted by Indian Dental Association (IDA) Foundation
at the hands of Honourable Former President of India,
Dr. A. P. J. Abdul Kalam

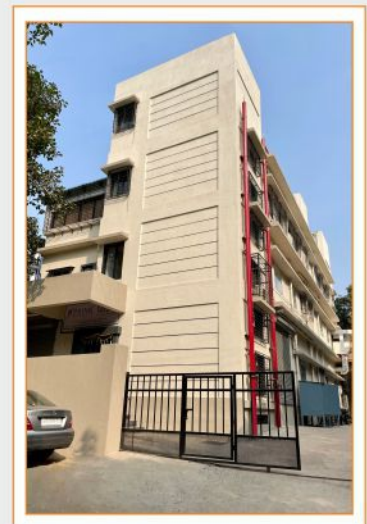


Table of Contents

Manufactured Products

Restorite

Restorite Bond 5G	1
Restorite Bond 7G	1
Restorite Bulk Fill (Flowable)	1
Restorite Bulk Fill Kit (Flowable)	1
Restorite Bulk Fill (Packable)	1
Restorite Bulk Fill Kit (Packable)	1
Restorite Cal	1
Restorite Cavo Surface Sealer	1
Restorite Core Build-Up	1
Restorite Desensitiser	1
Restorite Etching Gel (Regular/Twin/Value/ Big Pack)	2
Restorite Flow Viscous	2
Restorite Flow Viscous Kit	2
Restorite Micro Hybrid	2
Restorite Micro Hybrid Kit	2
Restorite Modelling Resin	2
Restorite Nano Hybrid	2
Restorite Nano Hybrid Kit	2
Restorite Pit & Fissure Sealant	2
BioTemp	2

Endodontic

Citra Wash	3
Prime MTA Bioceramic Root Canal Sealer	3
Prime MTA BioPutty	3
Prime MTA Packable	3
Primecresol	3
PurpleSeal	3
RC Cal (Regular/Twin Pack)	3
RC Cal I (With Iodoform) (Regular/Twin Pack)	3
RC Pex	3
RC Fill	3
RC Fill-I (With Iodoform)	3
RC Help (Regular/Twin/Big Pack)	4
RC Seal	4
RC Seal Plus	4
RC Soft	4
RC Solve	4

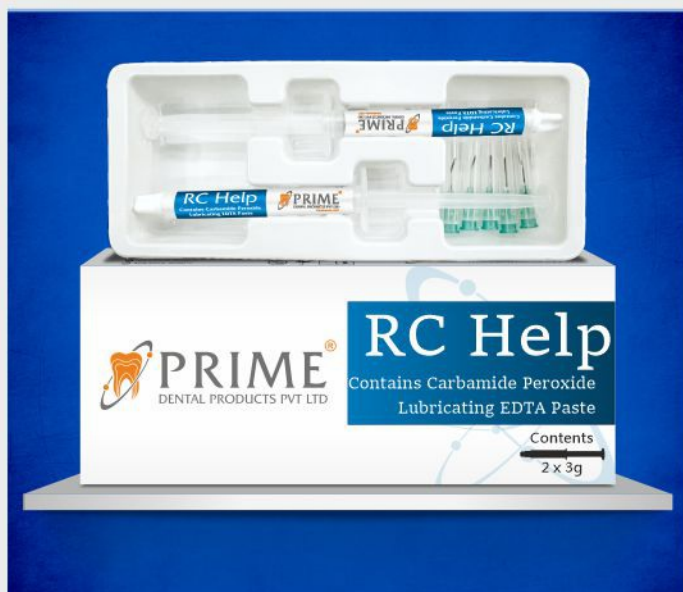
Prosthodontic

Prime Cem Luting	4
Ad-Sil Acura Bite Registration Putty	4
Ad-Sil Acura Putty - Hard Set	4
Ad-Sil Acura Hard Set Kit	4
Ad-Sil Acura Putty - Soft Set	5
Ad-Sil Acura Soft Set Kit	5
Ad-Sil Acura Light Cartridge	5
Ad Sil Acura Light Tubes	5
Prime Chrome	5
Algingum	5
Clean Tray	5
Dent Retract	5
Desensitiser (Regular/Twin Pack)	5
Green Stick	6
Image	6
Impression Composition	6
Prime Chrome	6
Retra Gel	6
Retra Liquid	6
Templute	6

Conservative

Aster Compo	6
Prime Cem Restorative	6
Prime Cem Ceramic Reinforced	6
Aster Proply	6
Caries Indicator	7
Dent Wash	7
Etching Gel (Regular/Twin/Big Pack)	7
Etching Liquid	7
TMP-RS	7
Temporary Filling Eugenol Liquid	7
Temporary Filling Zinc Oxide Powder	
Zinc Oxide Eugenol Cement Quick Set-	7
-Polymer Reinforced (Intermediate Restorative Material)	
BiofilmX	7

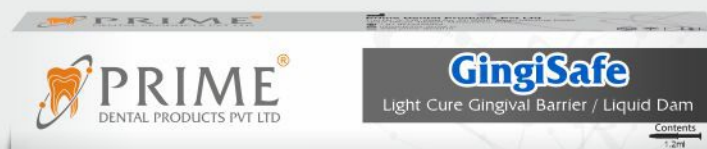
Twin Packs available in



New Products

✱ GingiSafe

Light Cure Gingival Barrier / Liquid Dam



Available Packing • Regular Pack : 1.2ml syringe • Kit : GingiSafe (1.2ml)- 4, Application Needles - 8

Restorite

✱ Restorite OrthoGrip Kit

Light Cure Orthodontic Adhesive System



Available Packing • Kit

- Restorite OrthoGrip Composite (5g) - 1
- Restorite OrthoGrip Primer (5ml) - 1
- Restorite Etching Gel (3ml) - 2
- Application Needles for Restorite Etching Gel - 10
- Microbrush - 10



Restorite

Restorite Bond 5G

5th Generation Bonding Agent for Dentine / Enamel



- Light-cured one component Total Etch System.
- Provides very good adhesion to dentine and enamel.

Available Packing : 5ml bottle

Restorite Bond 7G

7th Generation Self Etch Bonding Agent For Dentine & Enamel



- Light cured one component Self Etch Bonding System
- Provides very good adhesion to dentine and enamel

Available Packing : 5ml bottle

Restorite Bulk Fill (Flowable)

Light Cure Flowable Bulk Fill Composite Filling Material



- Depth of cure 4mm
- Available Shade
Universal

Available Packing : 2g syringe

Restorite Bulk Fill Kit (Flowable)

Contents:

- Restorite Bulk Fill Flowable (2gm) - 4
- Application Needles for Restorite Bulk Fill Flowable - 20



Shades included : Universal - 4

Restorite Bulk Fill (Packable)

Light Cure Packable Bulk Fill Composite Filling Material



- Depth of cure 4mm
- Available Shade
Universal

Available Packing : 4g syringe

Restorite Bulk Fill Kit (Packable)



Contents:

- Restorite Bulk Fill Packable (4gm) - 7
- Restorite Bond 7G (5ml) - 1
- Restorite Etching Gel (3ml) - 1
- Aster Compo (4gm) - 1
- Application Needles for Restorite Etching Gel - 5
- Microbrush - 10

Shades included: Universal - 7

Restorite Cal

Light cured Calcium Hydroxide Cavity Base/Liner



- Easy to use, light curable, one component system
- Used for direct and indirect pulp capping
- Used as cavity liner under filling material
- Low solubility

Available Packing : 2g syringe

Restorite Cavo Surface Sealer

Light Cured; Unfilled Methacrylate Resin-Based Cavo Surface Sealer



- For better margin integrity.
- For filling micro cracks.
- Can be used for GI and Composites.

Available Packing : 5ml bottle

Restorite Core Build-Up



- Depth of Cure 6mm

Available Shade
Translucent Shade

Available Packing : 4g syringe

Restorite Desensitiser

Liquid Solution for Hyper Sensitivity



- To treat pain in exposed cervical areas not indicated for restoration
- To alleviate or prevent dentinal sensitivity after preparation of teeth to receive direct or indirect restorations.
- For total etch system Restorite Desensitiser can be used as a re-wetting agent.

Available Packing : 5ml bottle

✦ Restorite Etching Gel 37% Phosphoric Acid, Contains Silica

Thixotropic



- Opaque bright purple color.
- Enamel etchant.
- Contains silica.
- Thixotropic gel.
- 37% Orthophosphoric acid.

Also available : Blue colour, Flowable consistency, Silica free

- Available Packing
- **Regular Pack** : 3ml syringe & 5 application needles.
 - **Twin Pack** : 2 x 3ml syringe & 10 application needles.
 - **Value Pack** : 25ml syringe, 25 application needles; 1 contactor & 3ml empty syringe.
 - **Big Pack** : 2 x 25ml syringe, 50 application needles; 1 contactor & 2 x 3ml empty syringe.

Restorite Flow Viscous Light Cure Flowable Viscous Composite Filling Material



Available Shade

A1
A2
A3
B2

Available Packing : 2g Syringe

✦ Restorite Flow Viscous Kit



Contents:

- Restorite Flow Viscous (2gm) - 4
- Application Needles for Restorite Flow Viscous - 20

Shades included: A1, A2, A3 & B2

Restorite Micro Hybrid Light Cure Resin-Based Dental Restorative Material



Available Shade
A1, A2, A3, A3.5, B1 & B2

Available Packing : 4g Syringe

✦ Restorite Micro Hybrid Kit



Contents:

- Restorite Micro Hybrid (4gm) - 7
- Restorite Bond 7G (5ml) - 1
- Restorite Etching Gel (3ml) - 1
- Aster Compo (4gm) - 1
- Application Needles for Restorite Etching Gel - 5
- Microbrush - 10

Shades included: (A1 - 2) (A2 - 2) (A3 - 2) & (B2 - 1)

Restorite Modelling Resin



Composite Sculpting Agent

- Low viscosity light curable resin for sculpting of composite.

Available Packing : 5ml Bottle

Restorite Nano Hybrid Light Cure Resin-Based Dental Restorative Material



Available Shade
A1, A2, A3, B2

Shades included : 4g Syringe

✦ Restorite Nano Hybrid Kit



Contents:

- Restorite Nano Hybrid (4gm) - 7
- Restorite Bond 7G (5ml) - 1
- Restorite Etching Gel (3ml) - 1
- Aster Compo (4gm) - 1
- Application Needles for Restorite Etching Gel - 5
- Microbrush - 10

Shades included: (A1 - 2) (A2 - 2) (A3 - 2) & (B2-1)

Restorite Pit & Fissure Sealant

Light Cured Universal Shade
Fissure Sealant



Available Shade
Universal Shade

Available Packing : 2g Syringe

Endodontic

✦ BioTemp



Easy & Ready-to-Use Bioceramic Intra Canal Temporary Filling Material

- Radiopaque
- Intracanal dressing material
- Non-setting, ready-to-use paste
- Contains silicates for gradual release of calcium ions
- Can be left in the root canal for up to 3 weeks
- Easy to remove
- Recommended for use in cases of perforation & resorption prior to Prime's MTA Putty, TA Packable & MTA Bioceramic Sealer

Available Packing : 3g Syringe & 5 Capillary Tips

Citra Wash

20% Citric Acid Solution



- Cleansing/conditioning of prepared canals, and
- Dissolving/cleaning residues of calcium hydroxide
- Removing smear layer

Available Packing : 30ml Bottle.

Prime MTA Bioceramic Root Canal Sealer



- Ready-to-Use Paste.
- Premixed, Easy-to-Use.
- Radiopaque
- Bioactive & Biocompatible
- Hydrophilic

Available Packing : 3g Paste & 15 Capillary Tips

Prime MTA BioPutty

Ready-to-Use Bioceramic Putty for Root Repair



- Putty Consistency
- Non-Staining
- Highly Radiopaque

Available Packing : 2g Syringe

Prime MTA Packable



MTA Packable can be used for Apexification, Repairing root perforations, Internal root resorption and Pulp capping.

Available Packing : 1g Powder & 5ml Liquid

Primecresol



Formocresol

Available Packing : 15ml Bottle

PurpleSeal

Flowable Composite for Sealing Orifice and Pulpal Floor



- Light-Cured Flowable Purple Composite
- High Filler Load: 67%
- Easy Identification of Orifice During Retreatment
- Can Also Be Used for Pulpal Floor Sealing
- Radiopaque

Available Packing : 2g Syringe & 5 Applicator Tips

RC Cal

Without Iodoform



Ready to Use Paste. Intracanal Temporary Filling

- Contains barium sulphate. Radio opaque.
- Highly alkaline $\text{Ca}(\text{OH})_2$ paste.
- Can be easily removed by reamers.
- Non drying paste.

Available Packing • **Regular Pack** : 2g syringe & 5 application needles
 • **Twin Pack** : 2 x 2g syringe & 10 application needles

RC Cal-I

With Iodoform



Ready to Use Paste. Intracanal Temporary Filling

- Contains barium sulphate. Radio opaque.
- Highly alkaline $\text{Ca}(\text{OH})_2$ paste.
- Can be easily removed by reamers.
- Non drying paste.

Available Packing • **Regular Pack** : 2g syringe & 5 application needles
 • **Twin Pack** : 2 x 2g syringe & 10 application needles

RC Pex



- Highly radiopaque calcium hydroxide paste with iodoform.
- Capillary tips for easy dispensing.

Available Packing • 3g syringe & 5 Capillary Tips

RC Fill

Without Iodoform



Root Canal Sealant & Filling

- Contains Calacium Hydroxide, Zinc oxide & Eugenol. (Without Iodoform)
- Radio opaque.
- Bioresorbable set mass.

Available Packing : 15g Powder ,10ml Liquid & 5g accelerator

RC Fill-I

With Iodoform



Root Canal Sealant & Filling

- Contains Calacium Hydroxide, Zinc oxide & Eugenol. (With Iodoform)
- Radio opaque.
- Bioresorbable set mass.

Available Packing : 15g Powder ,10ml Liquid & 5g accelerator

RC Help



Lubricating Paste for RC Biomech.

- EDTA paste.
- Contains carbamide peroxide.
- Increases RCT instrument's life.
- Gentle O₂ release while irrigating with NaOCl.
- Cleanses canal

Available Packing • **Regular Pack** : 3g syringe & 5 application needles
 • **Twin Pack** : 2 x 3g syringe & 10 application needles
 • **Big Pack** : 20g big syringe, 25 application needles, 1 contactor & 3g empty syringe

RC Seal



Epoxy Bonded Root Canal Sealant

- Root canal sealant.
- Epoxy bonded.
- Virtually formaldehyde free.
- Shrink free set.
- Eugenol free.
- Shall not retard composite setting.
- Non Bio Resorbable.

Available Packing : 10g Powder & 10ml Liquid
 ● 10ml refill liquid also available separately

RC Seal Plus



Epoxy Bonded Root Canal Sealant

- Hexamine free Epoxy bonded root canal sealant.
- Easy to mix paste-paste system in a two-barrel syringe.
- High radio opacity.
- Long term sealing properties.
- Good dimensional stability.

Available Packing : 1 x 15.5g Dual syringe

RC Soft



Softens Resin Based Cements

- Softening agent for epoxy resin based root canal sealants.

Available Packing : 15ml bottle

RC Solve



GP & ZnOE Solvent

- Softens GP points.
- Softens zinc oxide cement.
- Controlled penetration to avoid disturbing apical seal.
- Shall not retard composite setting.

Available Packing : 15ml bottle

Prosthodontic

Prime Cem Luting

Glass Ionomer Cement



Available Packing : 15g Powder, 10ml Liquid, Scoop/Spatula & Mixing Pad

Ad-Sil Acura Bite Registration Putty



- No Heating required
- Addition Silicone based Bite Registration Putty
- Shore A - 87
- Easy-to-Use
- Can be used for indexing
- No wastage compared to Bite Registration in Cartridge form

Half Arch Bite Impressions
x 40

Available Packing : 100ml Base & 100ml Catalyst

REF : ABR001

Ad-Sil Acura Putty - Hard Set



- Shore A-80.
- Addition silicone impression material.
- Accurate detailed reproduction.
- Highly stable impression.
- Compatible to all dye materials.
- Suitable for all impression technique.
- Ideal choice of impression for multiple pouring.

Full arch impressions
x 31

Available Packing : 400g Base & 400g Catalyst

REF : ASH001

Ad-Sil Acura Hard Set Kit



Polyvinyl Siloxane Impression Material



Full arch impressions
x 31

Available Packing Kit : Putty (400g Base & 400g Catalyst) + Cartridge 2 x 50ml (Base + Catalyst)

REF : AHK001

✱ Ad-Sil Acura Putty - Soft Set



- Shore A-60.
- Addition silicone impression material.
- Accurate detailed reproduction.
- Highly stable impression.
- Compatible to all dye materials.
- Suitable for all impression technique.
- Ideal choice of impression for multiple pouring.



Available Packing : 400g Base & 400g Catalyst

REF : ASP001

✱ Ad-Sil Acura Soft Set Kit



Polyvinyl Siloxane Impression Material



Available Packing Kit : Putty (400g Base & 400g Catalyst) + Cartridge 2 x 50ml (Base + Catalyst)

REF : ASK001

✱ Ad-Sil Acura Light Cartridge



Polyvinyl Siloxane Impression Material

- Shore A-65.
- Light body available in dual chamber cartridge.
- Hydrophilic nature.
- Can be used with any other addition silicone putty.



Available Packing : Cartridge 2 x 50ml (Base & Catalyst)

REF : ALC001

✱ Ad-Sil Acura Light Tubes



Polyvinyl siloxane impression material

- Shore A-65.
- Addition silicone impression material.
- Accurate detailed reproduction.
- Highly stable impression.
- Compatible to all dye materials.
- Suitable for all impression technique.
- Ideal choice of impression for multiple pouring.

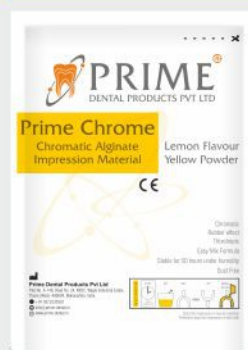
Available Packing : Tubes 25ml Base & 25ml Catalyst

REF : ALT001

✱ Prime Chrome



Chromatic Alginate Impression Material



- Lemon flavour yellow powder.
- Thixotropic.
- Rubber effect.
- Dust free.
- Easy mix formula.
- Stable for 50 hours under humidity.

- Pink color: Mixing
- Light Pink: Working time
- Yellow: Loading time



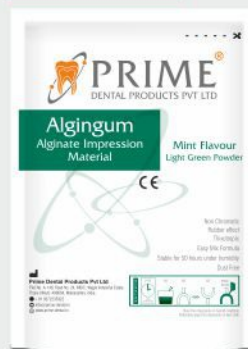
Available Packing : 450g Pouch

REF : PCR001

Algingum



Non-Chromatic Alginate Impression Material



- Mint flavour pista green powder.
- Thixotropic.
- Rubber effect.
- Dust free.
- Easy mix formula.
- Stable for 50 hours under humidity.



Available Packing : 500g Pouch

REF : ALG001

✱ Clean Tray



Alginate and Plaster Residue Cleaner



- Alginate and plaster residue cleaner.
- 250g powder for 2.5 litre solution.
- Biodegradable powder.
- Can clean up to 125 trays.

Available Packing : 250gm Powder

REF : CTA001

Dent Retract

Aqueous Ferric Chloride



- Helps in retraction of gingival.
- Does not retard the rubber base.

Available Packing : 30ml Bottle

Desensitiser

Contains Potassium Oxalate



- Blocks dentinal tubules.
- For immediate relief from sensitivity.
- Use after vital crown cutting.

Available Packing • Regular Pack : 3g syringe & 5 application needles
 • Twin Pack : 2 x 3g syringe & 10 application needles.

Green Stick



Tracing Sticks

- Low fusing compound.
- Soft green tracing sticks.
- For border moulding work.

Available Packing : 10 Sticks in a pack (90g)

REF : GRS001

Image



Impression Paste for Edentulous Cases

- Zinc oxide base.
- Eugenol free.
- No irritation to lip & mucosa.

Available Packing : 125g Base & 85g Catalyst

REF : IMG001

Impression Composition



For Accurate Edentulous Impressions

- High fusing compound.
- Functional impression compound.
- Accurate impression.
- Suitable for primary impression of complete denture prosthesis.

Available Packing : 5 Cakes in a pack (200g)

REF : IPC001

Retra Gel



25% Aluminum Chloride Gel

- Retra Gel is a 25% Aluminum Chloride aqueous viscous gel.
- No residue or stain making it ideal for use in the esthetic zone.
- The solutions facilitate the insertion of the cord into the sulcus

Available Packing : 3ml Syringe & 5 application needles

Retra Liquid



25% Aluminium Chloride Aqueous Astringent Solution

- For chemical retraction of gingival margin
- Clear transparent solution
- Non-staining
- Use along with Prime Retraction Cord
- Wash after use before final impression

Available Packing : 30ml Bottle

Template



Temporary Luting for C & B

- Two paste system.
- Eugenol free.
- Shall not retard any bonding agent.
- C & B can be removed easily.

Available Packing : 50g Base & 15g Catalyst

Conservative

Aster Compo



Alumina Based Polishing Paste for Polishing Dental Composites.

- Non-splattering.
- Thixotropic nature.
- Mint fragrance.
- Fine grit.

Available Packing : 4g Syringe

REF : ATC001

Prime Cem Restorative Glass Ionomer Material



Available Packing : 15g Powder, 10ml Liquid, Scoop/Spatula & Mixing Pad

Prime Cem Ceramic Reinforced



Glass Ionomer Material Contains Zirconium Oxide

Available Packing : 15g Powder, 10ml Liquid, Scoop/Spatula & Mixing Pad

Aster Prophy



Prophylaxis Paste

- Dental Prophylaxis Paste for polishing & removal of plaque & stains.
- Thixotropic nature.
- Non-splattering effect.
- Pumice based.
- Fluoride free.

Aster Prophy (Pack of 4)



New Flavours :



Available Packing : 45g tube / Assortment pack of 4 / 200g Jar

REF : ATP001

REF : ATP002

Caries Indicator



- Dye which shall stain carious dentin to bright red. This would enable dentist to distinguish carious lesion.
- Available colors : Red & Blue.

Available Packing : 15ml Bottle

Dent Wash

Aqueous EDTA



- 17% EDTA
- For smear layer removal.
- Use before bonding of dentin.
- Use before root canal sealant.

Available Packing : 30ml Bottle

✳ Etching Gel

37% Phosphoric Acid, Silica Free



- Blue color.
- Enamel etchant.
- Silica free.
- In soft gel consistency.
- 37% Orthophosphoric acid.

Also available : Purple colour, Thixotropic consistency, With Silica

Available Packing • **Regular Pack:** 3ml syringe & 5 application needles
 • **Twin Pack:** 2 x 3ml syringe & 10 application needles
 • **Big Pack:** 2 x 25ml syringe, 50 application needles, 1 contactor & 2 x 3ml empty syringe.

Etching Liquid

37% Orthophosphoric acid



- Enamel etchant.
- Silica free.
- Thick liquid consistency.
- 37% Orthophosphoric acid.

Available Packing : 15ml Bottle

TMP-RS

Temporary Filling Material



- Temporary filling for cavities.
- Sets with moisture.
- Easy to place and remove.
- Two wads to offer maximum protection from moisture.

Available Packing : 40g Bottle

Temporary Filling Eugenol Liquid



- Used with zinc oxide powder for temporary filling.

Available Packing : 15ml Bottle / 110ml Bottle

Temporary Filling Zinc Oxide Powder



- Used with eugenol liquid for temporary filling material.

Available Packing : 100g Bottle

✳ Zinc Oxide Eugenol Cement Quick Set Polymer Reinforced Intermediate Restorative Material



Available Packing : 15g Powder / 10ml Liquid

✳ BiofilmX Dental Chair Unit Waterline Biofilm Reducer



- Ready-to-use solution
- Economical method to maintain dental chair unit tubing hygiene
- 1 bottle offers 2 uses of 250ml each
- For new clinical setup only 250ml once a week is sufficient to obtain optimum results
- For old clinical setup 250ml needed for each day for the first 5 days and there after 250ml once a week is sufficient to obtain optimum results

Available Packing : 500ml Bottle

[REF] : BFL001



PRIME[®]

DENTAL PRODUCTS PVT LTD

Established in 1987

Manufacturer & Importer of Dental Materials & Equipment



Prime Dental Products Pvt Ltd

Plot No. A-148, Road No. 24, MIDC, Wagle Industrial Estate, Thane (West)-400604, Maharashtra, India.

+91 9272235922

info@prime-dental.in

www.prime-dental.in